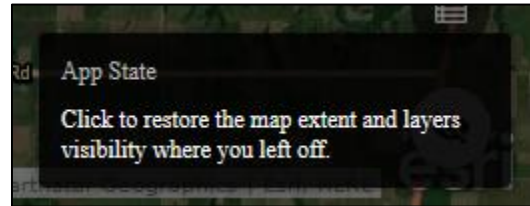


CityMaps: basic instructions

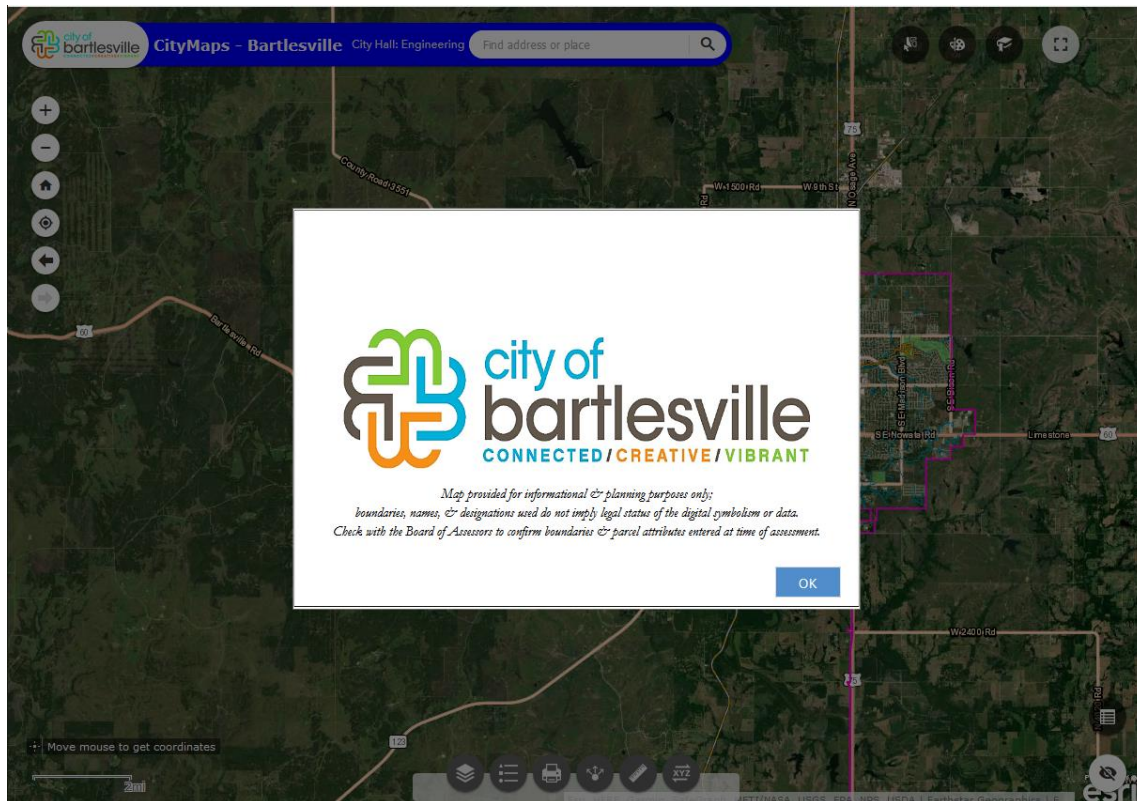
Bartlesville CityMaps data accessed at this website:

<https://arcgissrv.cityofbartlesville.org/arcgis/apps/webappviewer/index.html?id=a92f779249244786800903b49c90c275>

If you have visited the Bartlesville CityMaps site before then you can click in the bottom right corner at the time of opening the Citymaps. This black pop-up window, click it, and it will take you back to the last location you were at in the previous session.



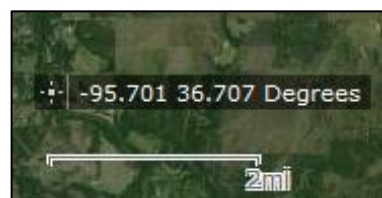
Even more important it remembers the layer configuration as you were last using it. Once you checkbox or uncheck the layers you want visible, you can return to the same configuration.



Click OK after reading disclaimer. If you need survey data, then you must go to the county assessors.

Bottom Left corner: Coordinates of location directly under the mouse cursor

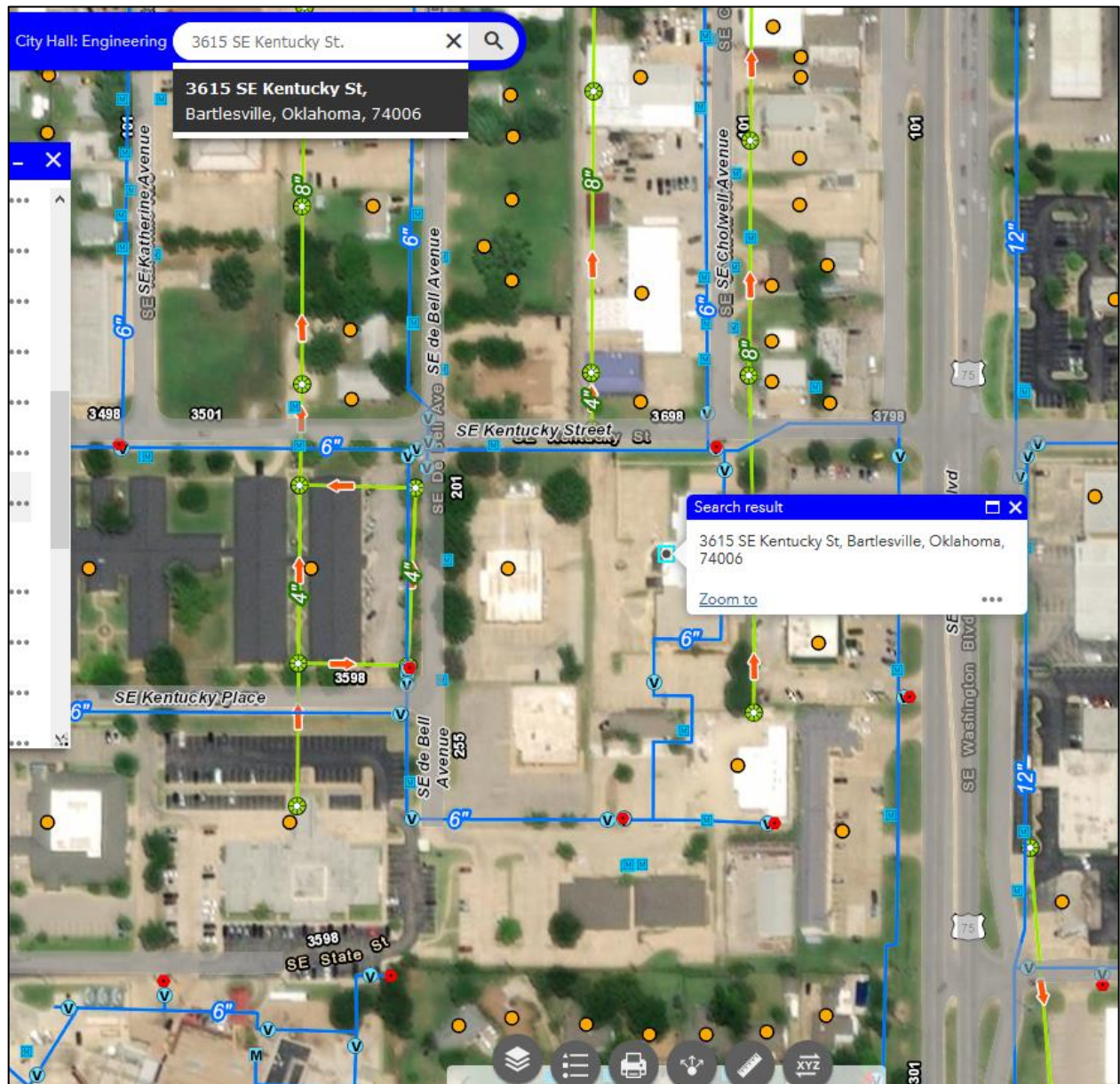
& Scale bar



Enter address & zoom to location



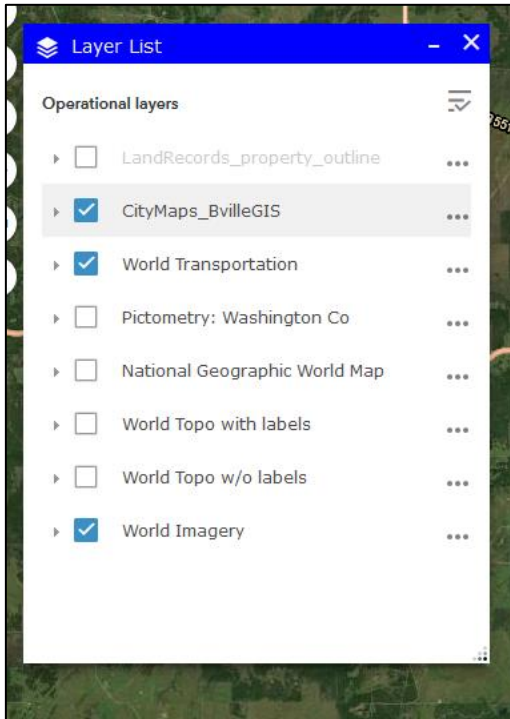
Enter the address in the search bar at top and click the magnifying glass (search symbol)



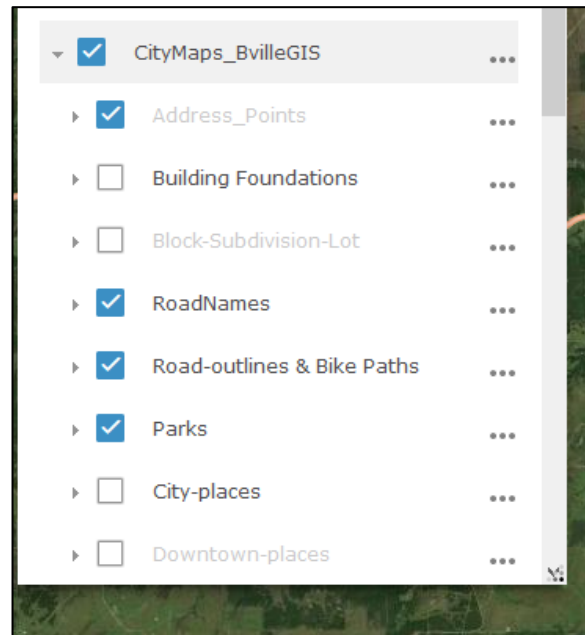


Layers: opens a list of selectable layers for the city.

Click drop down arrow in front of CityMaps_BvilleGIS



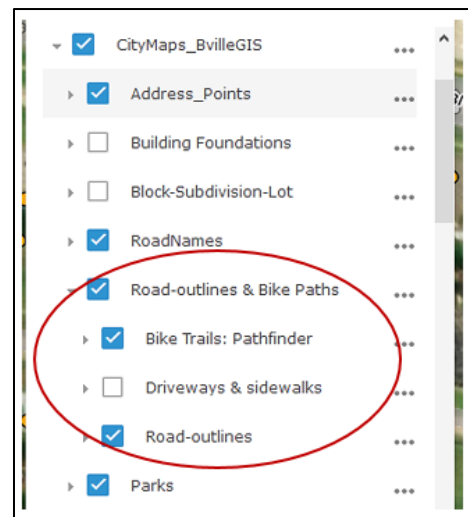
Click arrow: expand the CityMaps group.



There are groups of layers inside the Citymaps group:

Notice this with the Road-outlines & Bike Paths group

Also, notice that the Driveways & Sidewalks outlines are not active when you open CityMaps:

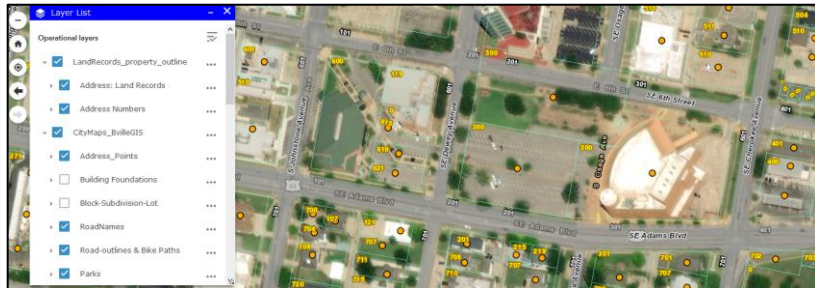


Tools—map menus

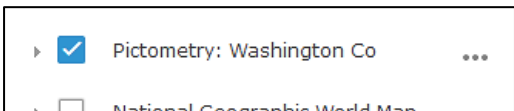
Buttons at bottom of maps:



- **Layers:** opens a list of selectable layers for the city.



- Some of the layers are grouped together under one checkbox.
- Open the drop down arrow in front of group to see the layers within group. Some layers are not turned on, when you open group.
 - CityMaps_BvilleGIS group must be opened to select most of the cities layers.
 - Landrecords and parcel data from the county assessors is in a separate group that is not activated (checkboxed) upon opening the map.



- Table of Contents Window--Layer List: also contains different basemaps that can be activated, including High Definition Bartlesville Aircraft Imagery Basemap

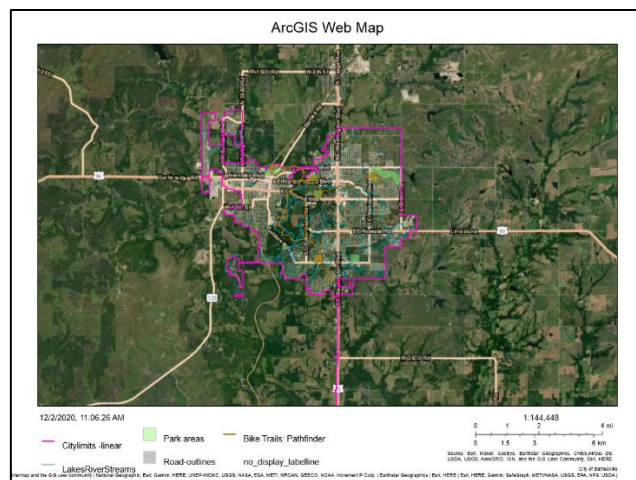


- **Legend:** A General Legend of visible layers
 - Some layers--even when turned on--will not show visible features for that layer until you zoom in to the area.
 - These will be grayed out until at a close enough zoom level



- **Print tool:** Print to PDF. Choose an option like 'Letter A4 Landscape' and it will format with a title and legend and scale bar. If you print with the default 'Map Only' then only an image is produced. Can also print to JPG, GIF, EPS, SVG

- Choose 'Advanced' button to set extent, print quality (dots per inch), scale bar, and size, etc.





- **Share:** provides sharable links, URLs, to connect to or embed our Citymaps

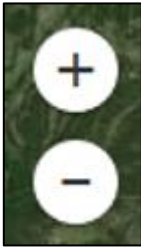


- **Measurement tools:** Distance, Area, and identify lat/long coordinates of a location



- **Coordinate Conversion:** translate into other coordinate styles

Menu at top left of Citymaps



- Zoom buttons
 - However, the scroll wheel on the mouse works even better.



- Return to the default extent that overviews the city upon opening maps.
 - After zooming, this will return you to starting extent: Home



- Reports your location on the map, after you give it permission to access location



- Back and forward buttons for going back to a previous extent, a frame of view established each time of zooming in to locations. They will be gray until you zoom away from the opening –home--extent



Menu at Bottom Right corner of Citymaps

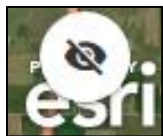


- This will open the attribute table that gives textual and numerical info on the visible layers in current extent of viewable map
 - It only shows the data for what is visible in the frame
 - At the top there is a list of features checked as viewable
 - You can click through them, and scroll down
 - Or use select to select specific features
 - In addition, the 3 dots beside each layer in the layer list will open the attribute table for that specific layer.



OBJECTID_1	Shape	OBJECTID	STR_ID	STR_NAME	AREA_SQFT	BORDER_FT	identify	number_location	type	Shape.STArea()	Shape.STLength()
27		2112	838	NE Nebraska Street	22177.70448875	2320.09167655	streets		pavement	22177.70422363281	2320.091676553707
28		2116	0		52282.56195232	6144.15686218	streets		pavement	52282.56225585937	6144.156862175806
29		2118	0		5501.60824541	844.32161792	streets		pavement	5501.608642578125	844.3216179153184
62		1827	844	Park Hill Loop	38788.48849215	3016.11186252	streets		pavement	38788.48889160156	3016.111862517064
63		1833	0	Ohio Street	22589.15400975	1438.40482367	streets		pavement	22795.38415527343	1444.168358755206

107 features 0 selected

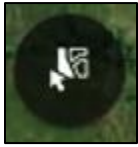


- This shows an overview of the wider area surrounding the current extent of the viewable map frame.

And, it contains a box that can be moved with the mouse in order to place the frame to another general location.



Menu at top right of Citymaps



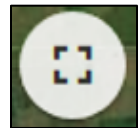
- Select: Choose the layers you want to select features.
 - Grayed out layers are not visible, possibly based on a zoom level or a checkbox



- Drawing Tools: can create arrows, circles, squares, outline paths



- Bookmarks: Bookmark locations where you might want to return



- Full Screen Mode: exit windows and ascribes map to fill computer screen
 - Press esc when want to exit full screen
-

Pop-Ups

Many layers have pop up info windows that show the attributes for a specific feature when you click on them.

If you have checked the LandRecords group in the Table of Contents List of layers, you can then, once zoomed in, click a parcel polygon to get sales data pop-up window.

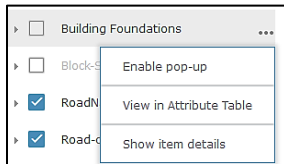
The map opens with address points layer active, just click an address point to get address info.

If those feature layers are checked and if there are specific features stacked on top of each other at a point, then in the top left of the window will be a (1 of #)—the arrow across the bar will cycle through them.



There is always going to be at least two. The imagery is a layer and it will always give the basic imagery metadata.

If you have Landrecords polygon layer active and you then click on the address point you will get multiple windows (1 of 3) with data related to every active layer under the point you click that have pop-ups active.

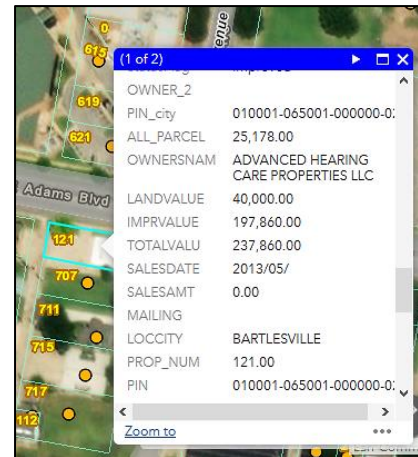
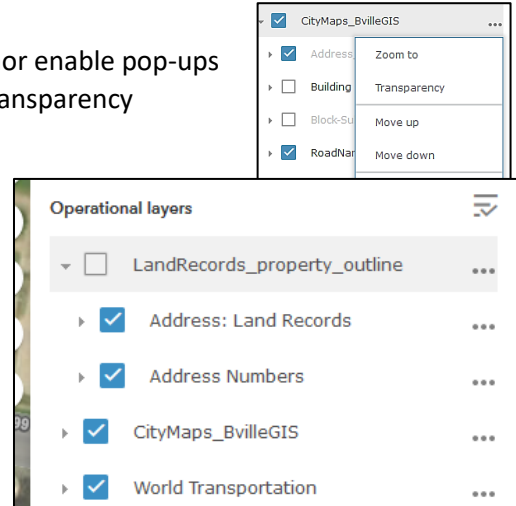
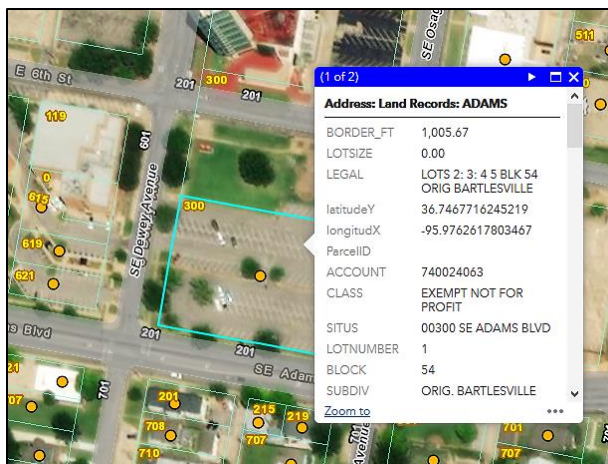


If a layer does not show a pop-up, you can click the 3 dots to the right of the layer names in contents window—this allows you to enable the pop-up or just open the attribute table

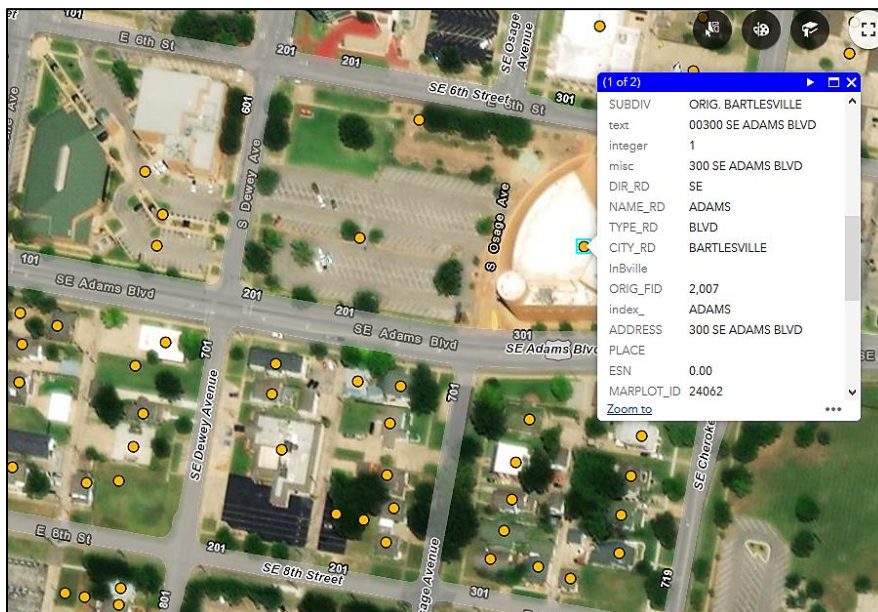
Note: you cannot view attributes nor enable pop-ups if click 3 dots next to a group of layers; that will only allow transparency settings and zoom to the extent of group

Example below. Land Record data (sales data) will not show up unless the group of layers is checked for Landrecords polygons.

Use the scroll bar on the right to move down the attributes in the pop-up windows.



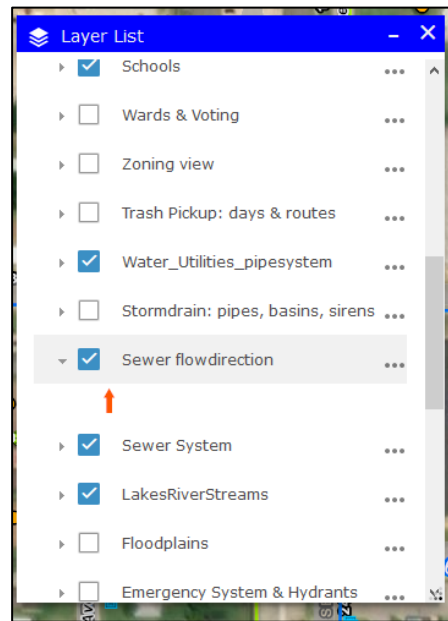
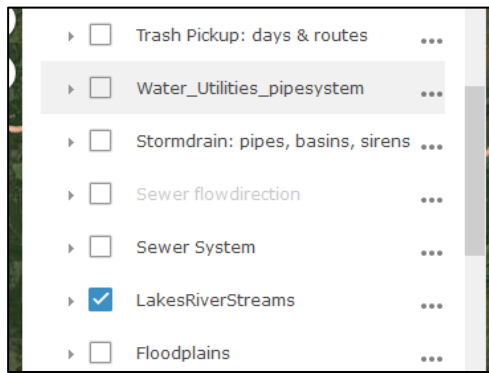
However, address point pop-up windows are active when the CityMaps opens



Selecting layers:

Scroll down and find water, sewer, storm, trash routes.

Checkbox the ones you want to see.



Example: Water Utilities

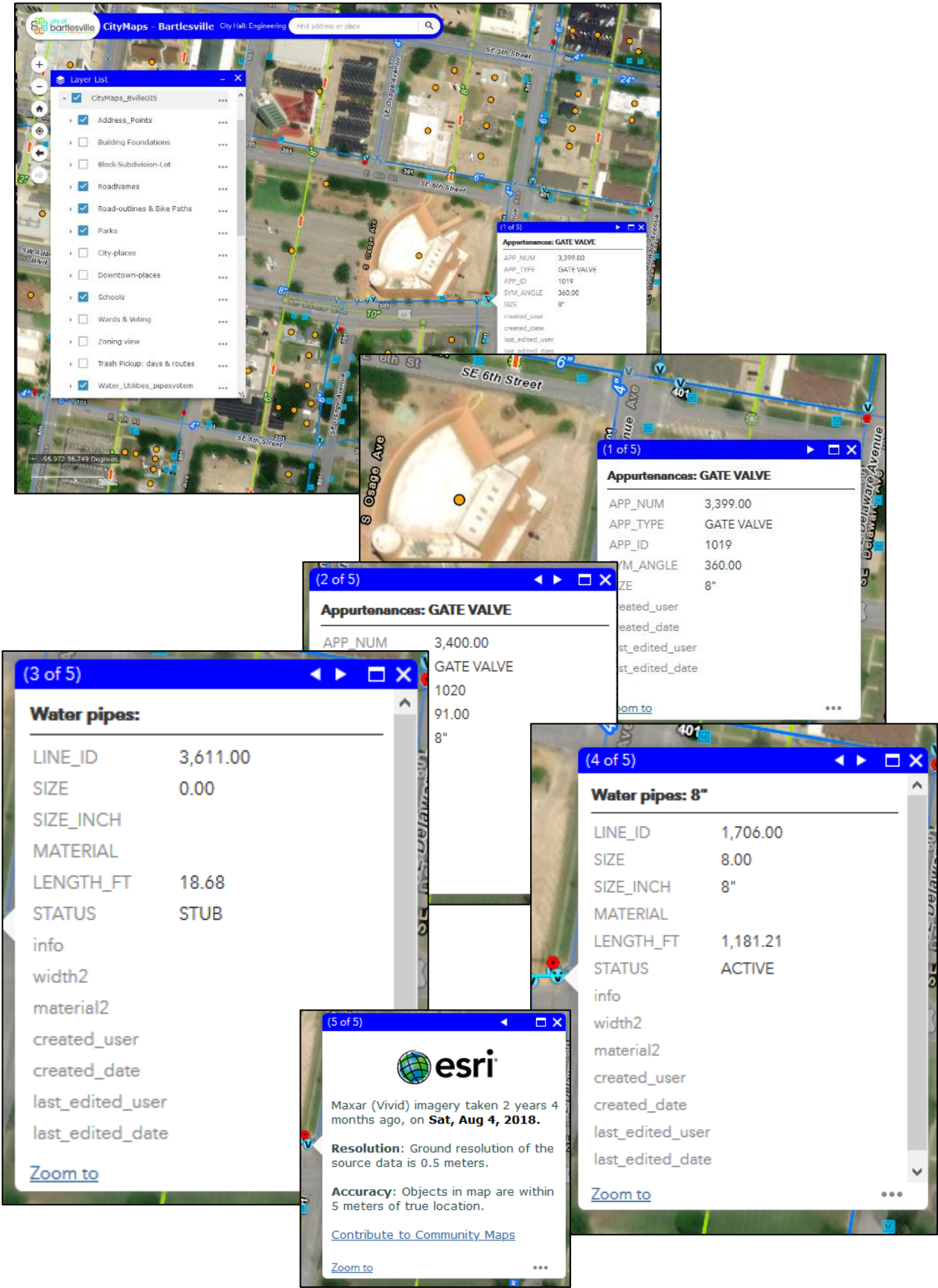


click three dots to view attribute table

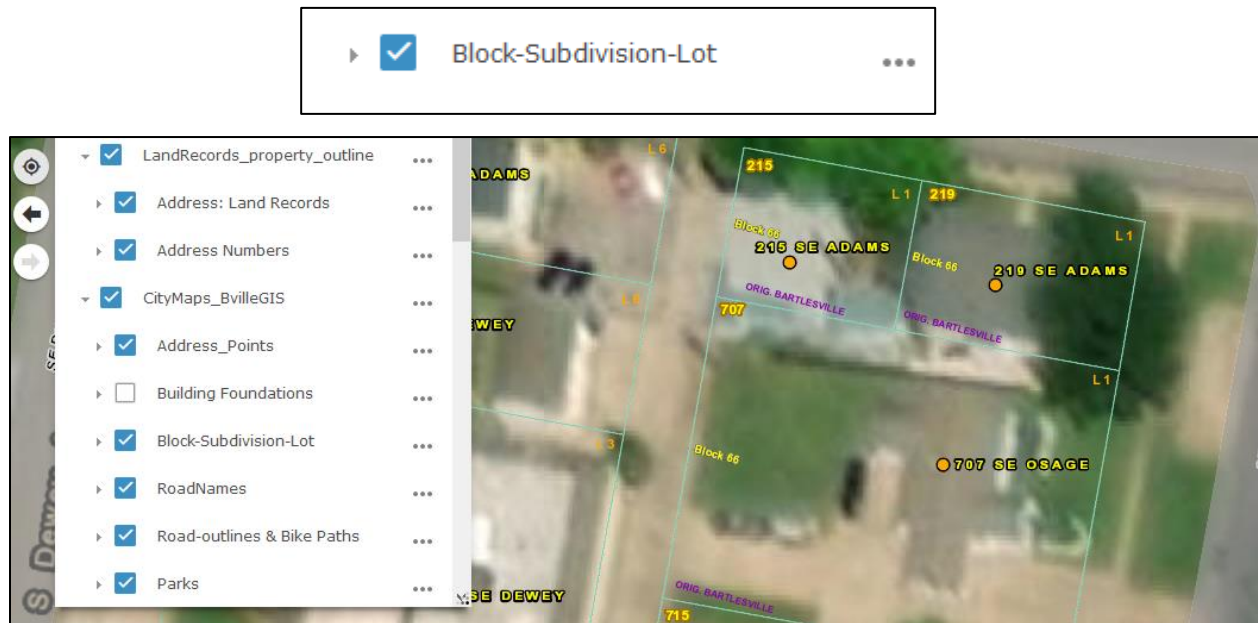
Water pipes									
LINE_ID	SIZE	SIZE_INCH	MATERIAL	LENGTH_FT	STATUS	info	width2	material2	
1,705.00	24.00	24"		417.19	ACTIVE				
1,706.00	8.00	8"		1,181.21	ACTIVE				
1,710.00	6.00	6"		369.62	ACTIVE				
1,712.00	4.00	4"		349.17	ACTIVE				
1,783.00	4.00	4"		406.81	ACTIVE				
1,706.00	6.00	6"		1,002.77	ACTIVE				

60 features 0 selected

Different pages in the pop-up window (1 of 3) and (2 of 3) and (3 of 3) and (4 of 3) and (5 of 3)



Example: Block-Subdivision-Lot (when active) will label those at close zoom in



Example: Contour lines labeled

