


















STATE OF THE CITY

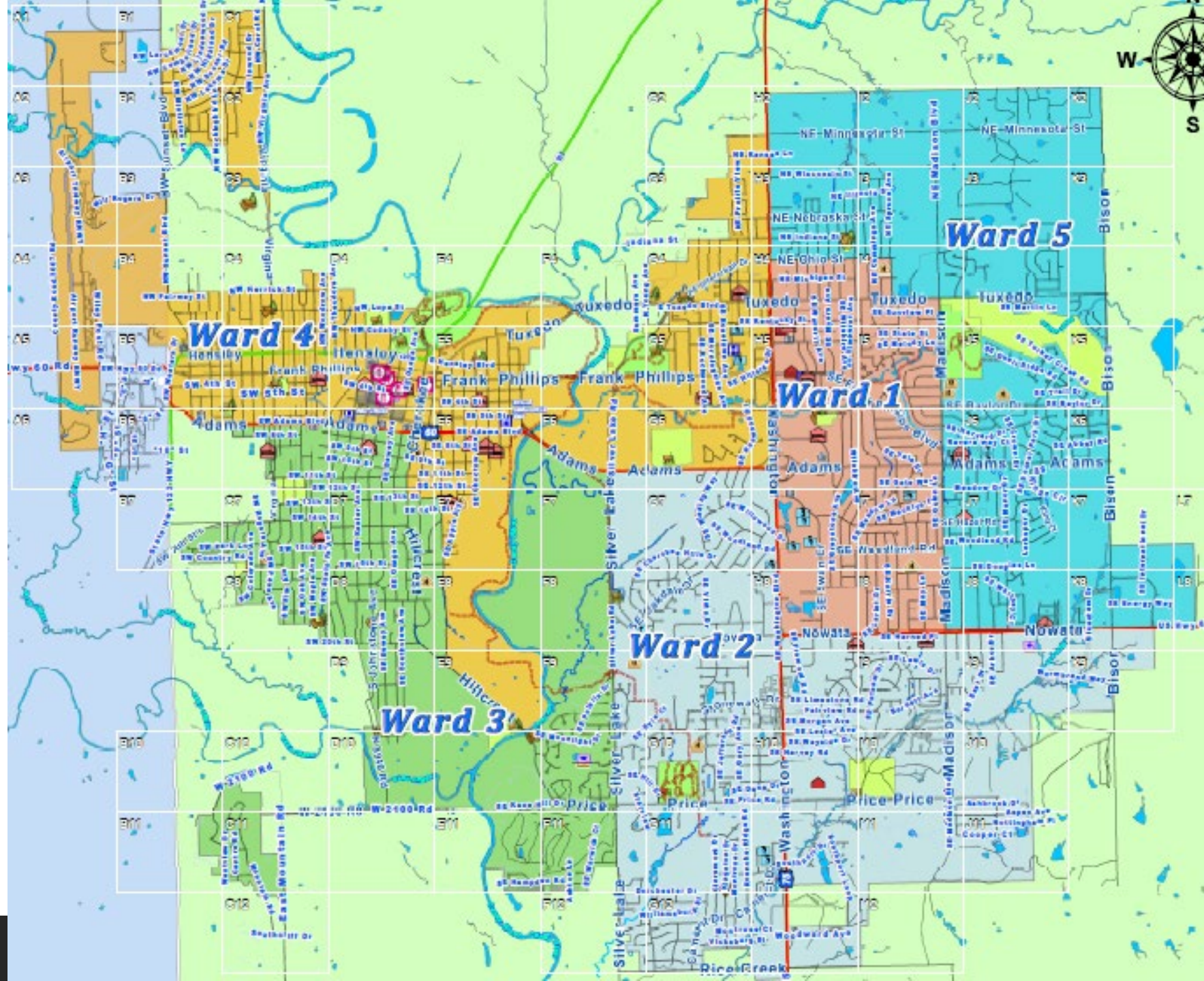
CITY MANAGER MIKE BAILEY

WHAT DOES YOUR CITY DO?

- | | |
|--|--|
|  Collect property tax |  Jail |
|  Collect sales tax |  Emergency dispatch |
|  Collect hotel/motel tax |  Police and fire |
|  Maintain most City streets |  Ambulance |
|  Maintain Adams Blvd east of Hwy 75 |  Golf Course |
|  Maintain Adams Blvd west of Hwy 75 |  Cemetery |
|  Water |  Birth and death records |
|  Natural gas |  Property deeds |
|  Sewer |  Contractor licenses |
|  Electric |  Maintain parks |
| |  Maintain residential sidewalks |

WHO IS YOUR CITY?





Dale Copeland, Mayor, Ward 1
918-331-7902
copeland4bville@aol.com
Ward 1 map



Jim Curd Jr., Vice Mayor, Ward 3
918-397-7902
Jimforward3@gmail.com
Ward 3 map



Loren Roszel, Ward 2
918-440-0215
ward2council@cityofbartlesville.org
Ward 2 map

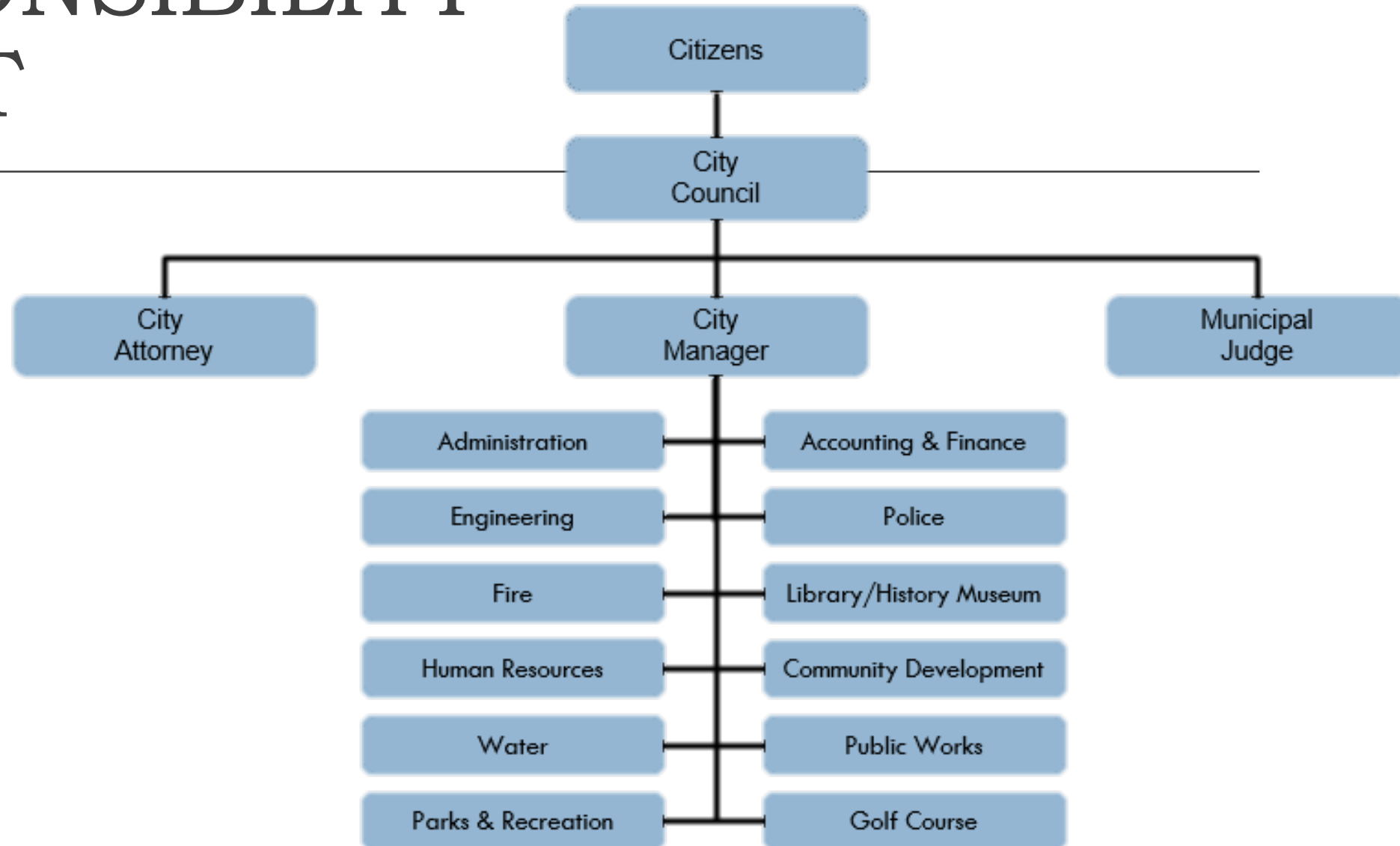


Billie Roane, Ward 4
918-559-2634
ward4council@cityofbartlesville.org
Ward 4 map



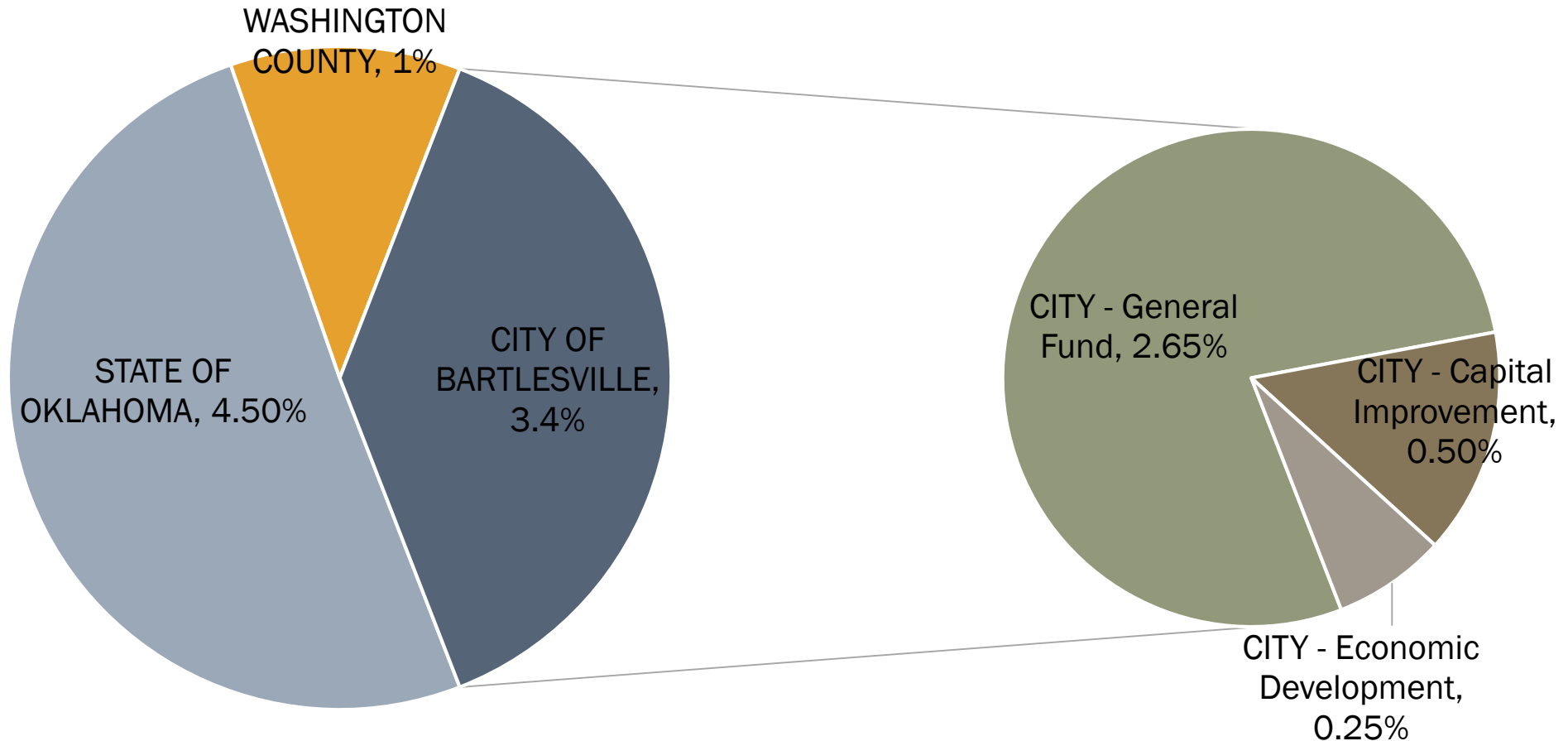
Trevor Dorsey, Ward 5
918-886-3516
ward5council@cityofbartlesville.org
Ward 5 map

RESPONSIBILITY CHART

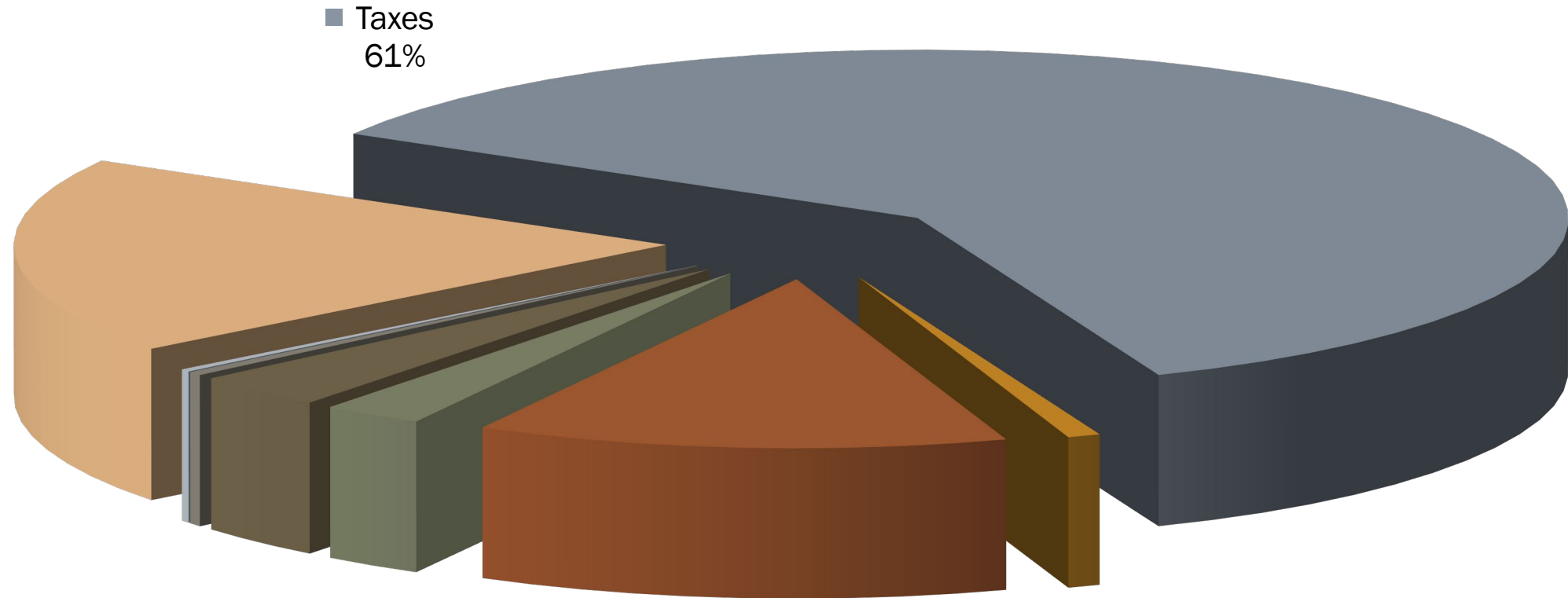


FINANCES

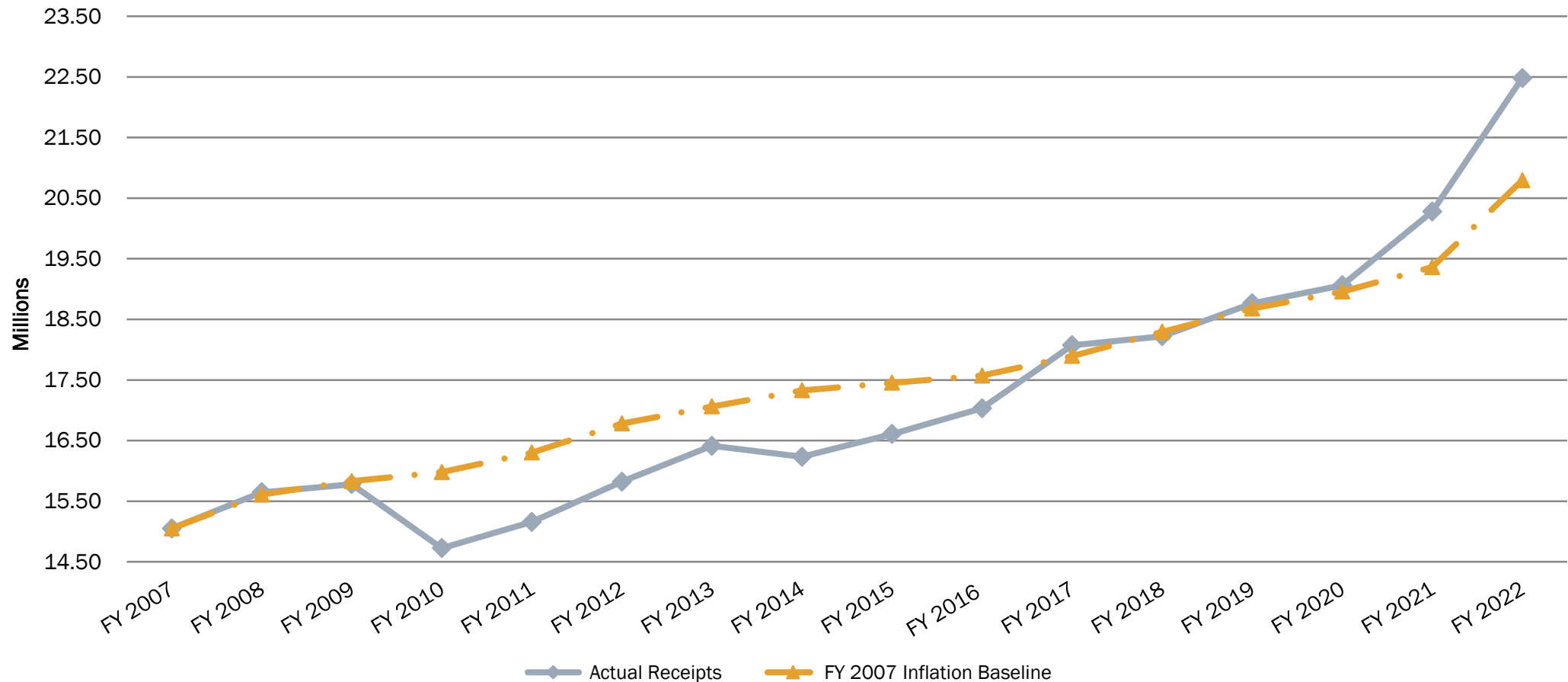
BARTLESVILLE SALES TAX – CURRENTLY 8.9%



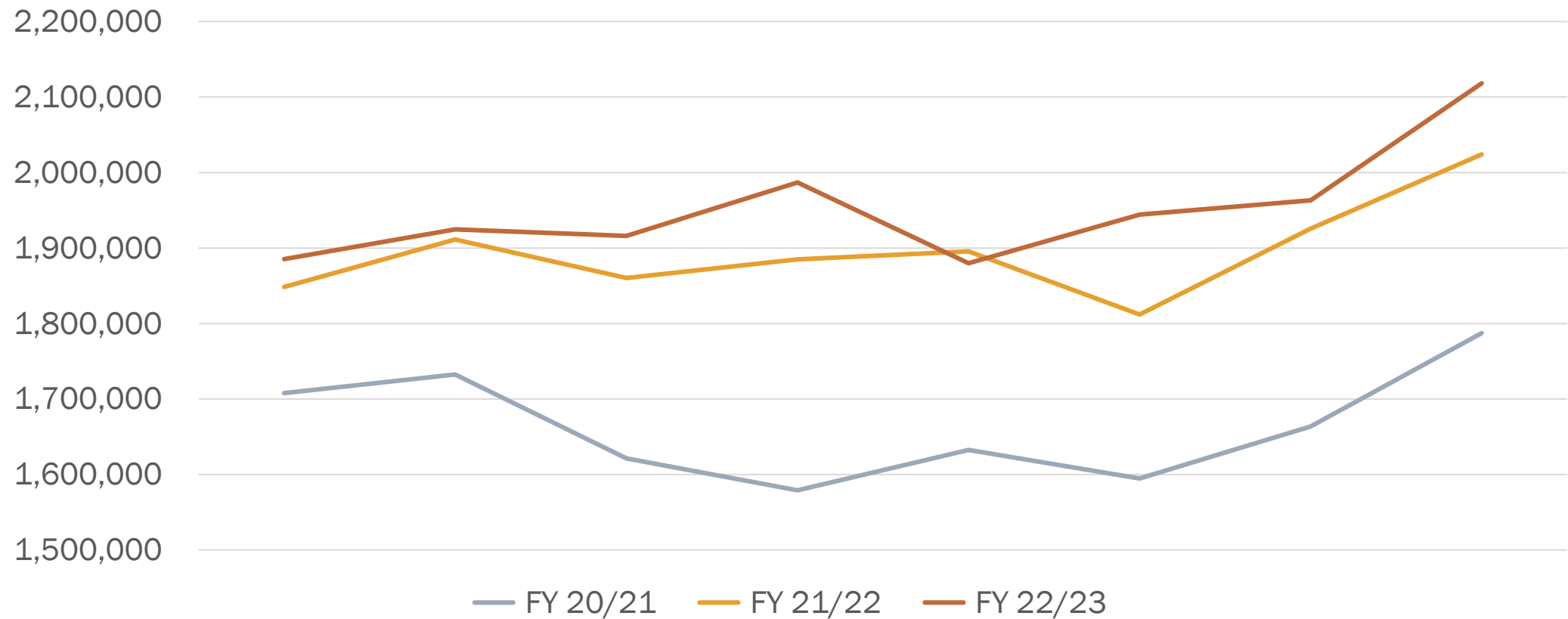
GENERAL FUND BUDGETED REVENUE



HOW DOES SALES TAX COMPARE TO INFLATION?



MOST RECENT SALES TAX RESULTS



WHAT'S THE TAKEAWAY?

By the numbers through the first 8 months:

- \$15,6M – sales tax for this year
- \$456k – more than last year
- \$1,2M – more than budget expectations

And yes, these numbers are impacted by inflation

And no, there is no way to impact what a potential recession will do to sales tax

CAPITAL IMPROVEMENT FUNDING

CAPITAL IMPROVEMENT SALES TAX

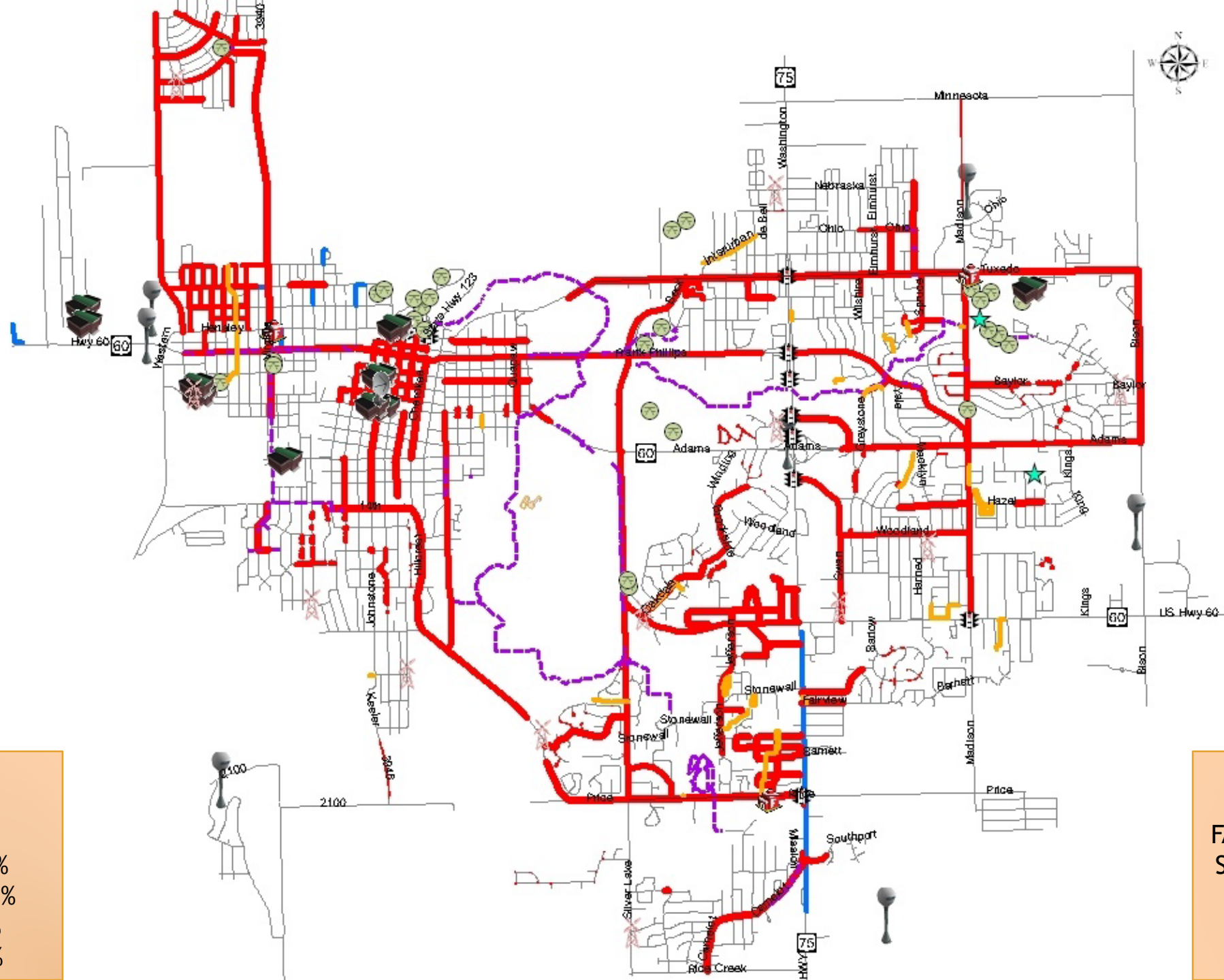
Sales tax – 1/2 cent capital improvement sales tax

- Citizen election every 5 years
- About \$3M per year
- Vehicles, equipment, building improvements, smaller capital projects
- Amount received varies depending on sales tax collections
 - Only time horizon is known upon passage

GENERAL OBLIGATION BONDS

Issue bonds over time to keep mil levy at about 15

- Citizen election about every 3 years
- About \$5M per year
- Large equipment and capital projects
- Amount is certain
 - How long it will take to issue full authorization is only an estimate



2010-Present
 STREET - 39%
 PARK - 28%
 FACILITIES - 18%
 EQUIPMENT - 12%
 DRAINAGE - 2%
 Downtown - 1%

1999-Present
 STREET - 49%
 FACILITIES/EQUIP - 18.5%
 SANITARY SEWER - 10.6%
 DRAINAGE - 9.9%
 PARK - 11.3%
 WATER - 0.7%

UPCOMING PROJECTS

Minnesota Rehab – out for bid

Wayfinding, Park, and Entry Signs – 50% complete

Bridge Rehab Tuxedo and Sunset – in design

Pathfinder Renovation – in design

MJ Lee Park Improvements – 75% complete

UPCOMING PROJECTS

Sooner Pool Water Slides – complete

Robinwood Soccer Field Lighting – 40% complete

Park Infrastructure Improvements – in design

Pickleball – in design

\$2.5M Preventative Maintenance Street Projects – awaiting PCI

WATER AND WASTEWATER UTILITIES

BY THE NUMBERS

16,500 customers

Employees:

- Water = 38
- Wastewater = 12

Average annual capital outlay over last 3 years:

- Water = \$1.7M
- Wastewater = \$1.6M

UTILITY CAPITAL IMPROVEMENT FEES

Wastewater capital investment fee = \$3M in FY 2023

- Wastewater plant expansion
- Major collection system improvements
- Vehicles and equipment

Water capital investment fee = \$1.8M in FY 2023

- Wastewater reuse
- Water system improvements debt service (water plant, tank renovations, distribution system imps)

MAJOR UTILITY CAPITAL IMPROVEMENTS

Wastewater Reuse Project = \$8.5M

- Indirect system that uses river for conveyance and treatment
- About 3 miles of line, pump station, and additional treatment

Wastewater Plant Expansion = \$55M

- Will expand plant capacity from 7MGD to 8.2MGD
- All existing structure renovated and addition of new structures
- Flood protection via perimeter berm is proposed
- Construction to begin October 2024
- Construction completed December 2028

The site plan illustrates the layout of the Chickasaw Sewerage Treatment Plant. Key features include:

- Primary Treatment:** Primary Digester No. 1 and No. 2, Primary Clarifier No. 1 and No. 2, and a Gravity Belt Thickener Building.
- Secondary Treatment:** Aeration Basins No. 2A, 2B, 2C, and 2D, Secondary Clarifier No. 1 and No. 2, and a Secondary Flow Splitter.
- Sludge Handling:** Digester and Digester Building, Digester Storage No. 1 and No. 2, and a Sludge Storage Building.
- Other Buildings:** Process Control Building, Garage, Headworks Building, Administrative Building, and a Generator.
- Infrastructure:** Effluent Pumping Station, UV Disinfection, and a Thickening Building.
- Future Expansion:** Future Aeration Basins (2EA, 20X120) and Future Clarifiers (120' and 120' Clarifier Future).

TIMELINE OF WASTEWATER TREATMENT PLANT DECISIONS

2009 – Completed facility plan

2010 – Water for 2060 Law passed by Oklahoma

2013 – ODEQ issues consent order including design and construction of wastewater plant expansion (design due 2017)

2015 – ODEQ amended consent order to allow City more flexibility due to limitations of funding (design now due 2019)

2016 – Reassessed the facility plan to include wastewater reuse

2017 – Council approved amended plan which included wastewater reuse

2019 – Staff submits schedule for design and construction, which closes consent order

2020 – ODEQ issues new consent order requiring design and construction of plant

2022 – City requested amendment to consent order delaying deadline for construction

2024 – Construction to begin

2028 – Construction complete

2029 – Any guesses?

MAJOR UTILITY CAPITAL IMPROVEMENTS

Main Collection System Improvements = \$30M

- Replace 4 lift stations
- Add equalization basin
- Replace/upsized force main
- Starts at Rice Creek Rd/Silver Lake (Limestone lift station)
- Ends at Tuxedo/Chickasaw (treatment plant)



LONG-TERM WATER SUPPLY

Current water supply:

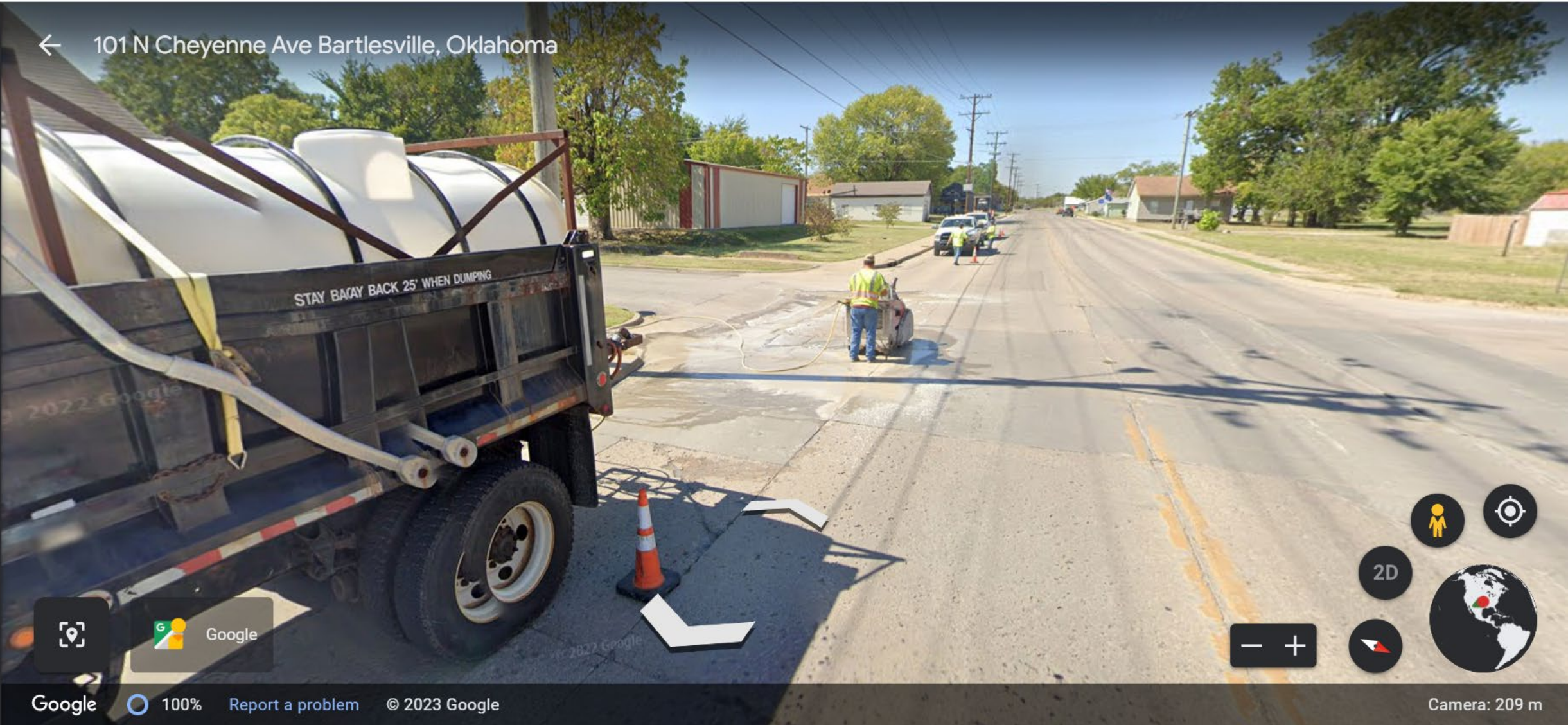
- Hulah Lake
- City owned Hudson Lake
- Caney River
- Copan Lake (limited)

Future water supply:

- Wastewater reuse – under construction
- Copan Lake (expanded) – working on Federal legislation
 - Conveyance system will need to be upgraded in future
- Will provide water beyond next 50 years

STREETS

101 N Cheyenne Ave Bartlesville, Oklahoma



UPCOMING ODOT PROJECTS

US 60 west of US 75

- Bid in February 2025

US 60/US 75 Overpass

- Already awarded but won't start until after construction complete on OK 123 Cherokee Bridge
- Sometime after March 2023

STREETS

How are street selected for repair?

- Pavement Condition Index
- Street and Traffic Committee
- City Council
- Elections

Why don't we just repair the worst streets first?

- Streets with higher traffic receive higher priority
- Much more cost effective to maintain streets before failure than to rebuild
- 1 mile rebuild = \$1.5M vs 1 mile rehab = \$500k

BARTLESVILLE

NEXT

OUR VALUES

INTEGRITY: Do the right thing; the rest will follow. We hold ourselves to the highest level of honesty, truthfulness and ethical conduct.

COMMUNITY: We are both responsive and proactive in our efforts to help Bartlesville realize our potential.

SERVICE: We are dedicated to providing effective and timely customer service with courtesy and respect in a fiscally sound manner.

TEAMWORK: We collaborate on common goals for the greater good of our community.

COMMUNICATION: We share information and ideas in a clear, open and timely manner.

INNOVATIVE: Ours is a “do things differently, do different things” mindset in our approach as community builders.

OUR VISION

A Leading Community by Choice.

OUR MISSION

Through collaboration, we strive to provide exceptional public services and enhance the distinctive character of our community.

STRATEGIC PRIORITIES AND KEY OBJECTIVES

Financial Strength and Operational Excellence

Effective Infrastructure Network

Economic Vitality

Community Character

Emerging Issues

BEFORE AND AFTER

BEFORE



AFTER



BEFORE



AFTER



BEFORE



AFTER



AND, AFTER



BEFORE



AFTER



THEN



NOW



YESTERDAY...



AND TODAY - POLICE



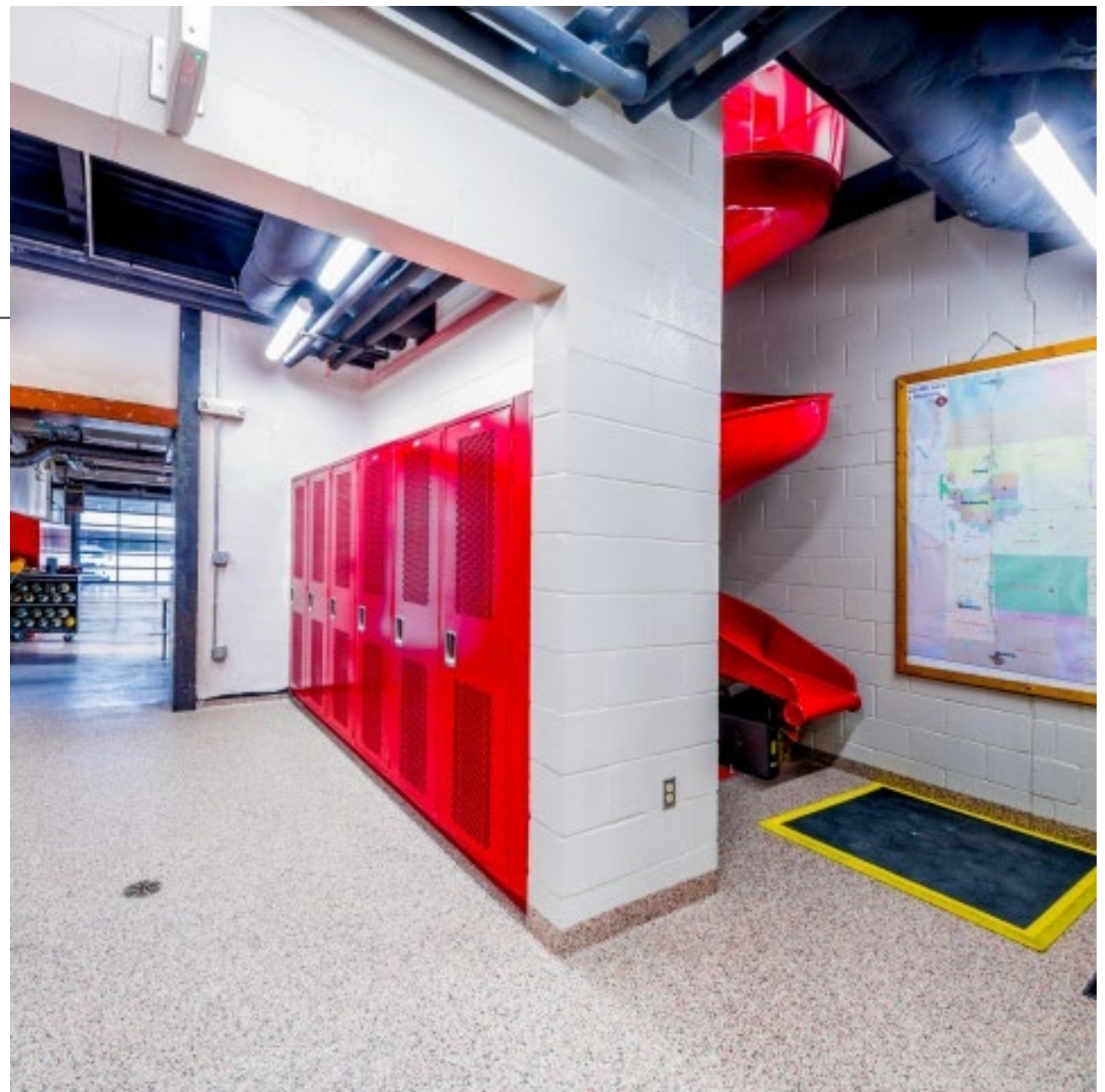
POLICE



FIRE



FIRE



THEN



NOW



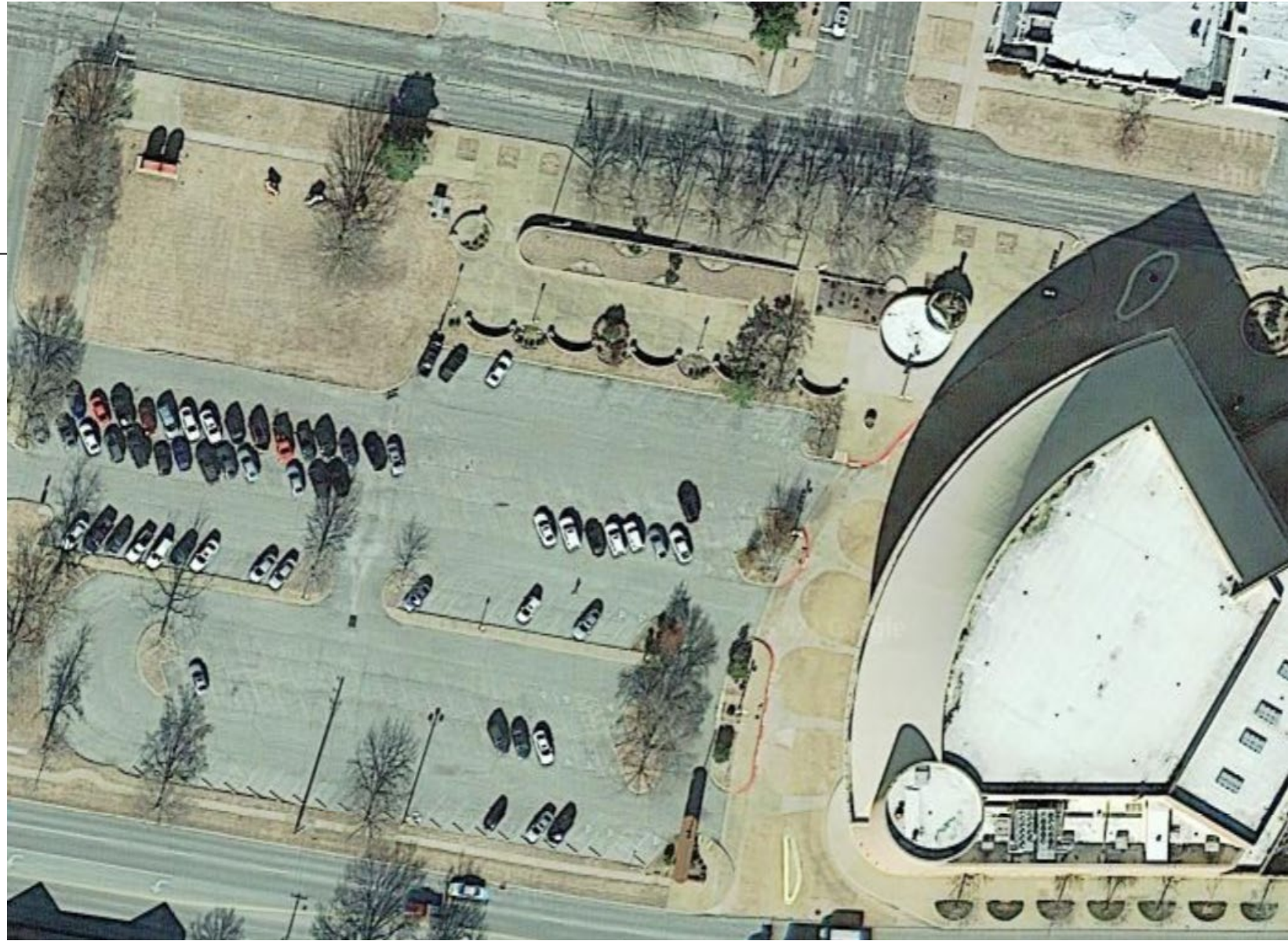
THEN



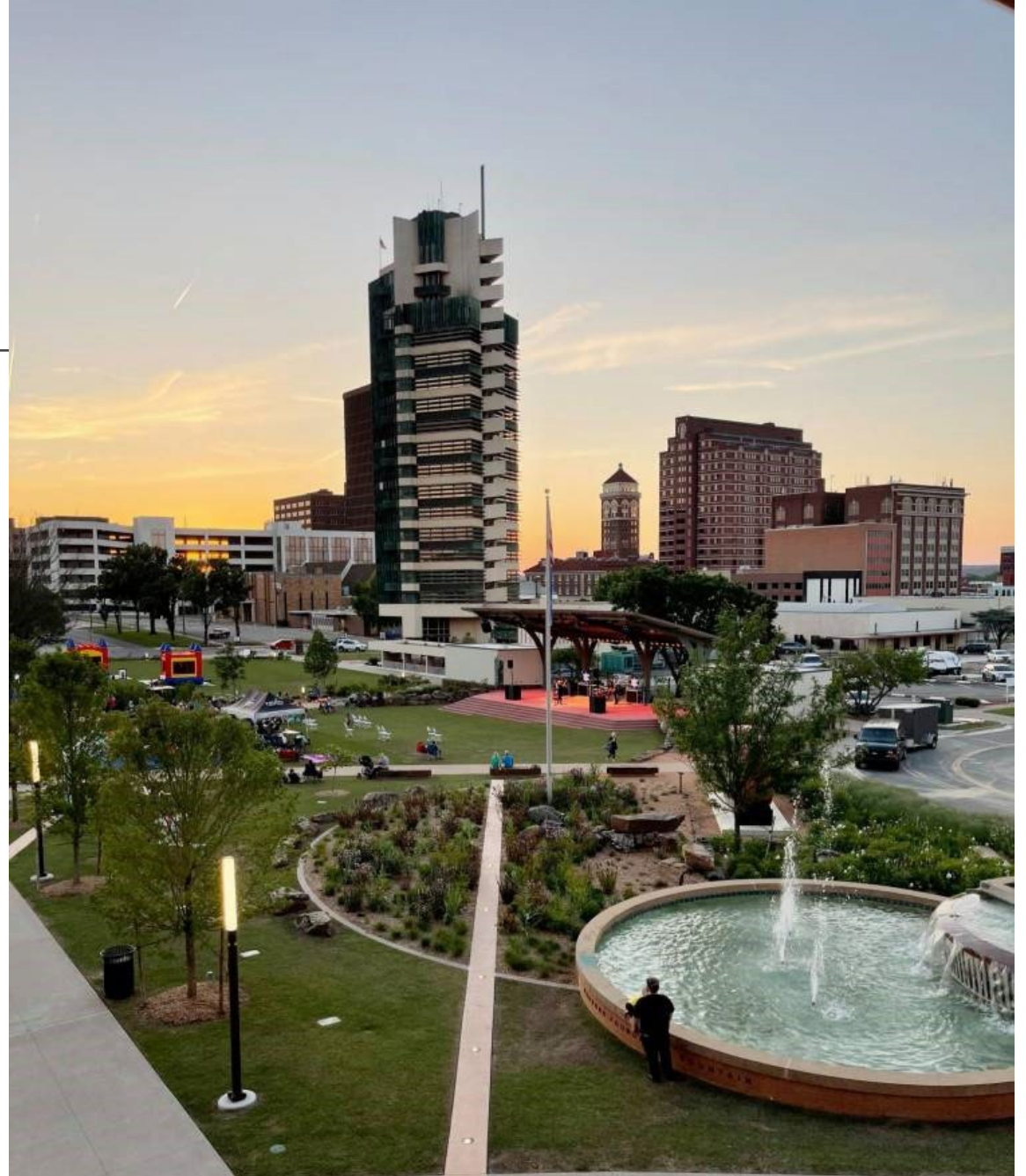
NOW



THEN



NOW



CONTACT US!

Elaine Banes (918) 338-4282

Mike Bailey mlbailey@cityofbartlesville.org